

032 74 99 225

MAZUR

www.zurawiewiezowe.pl

DIN 15018

H1 / B3

BGL 2125

0056

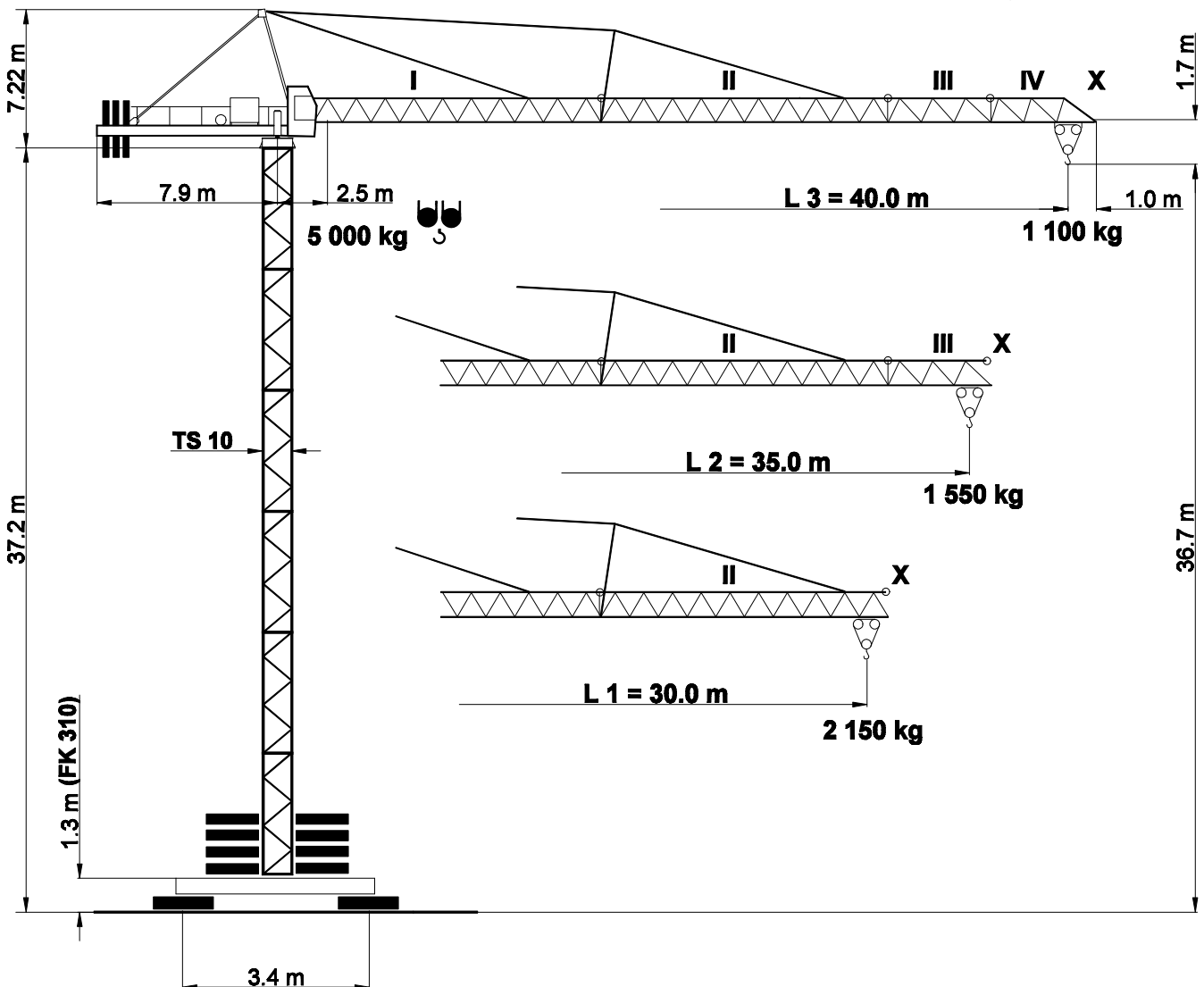
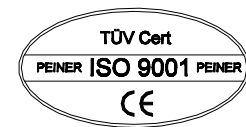
Max. Tragfähigkeit

5.0 t

Lifting capacity

Force de levage

PEINER SK 56



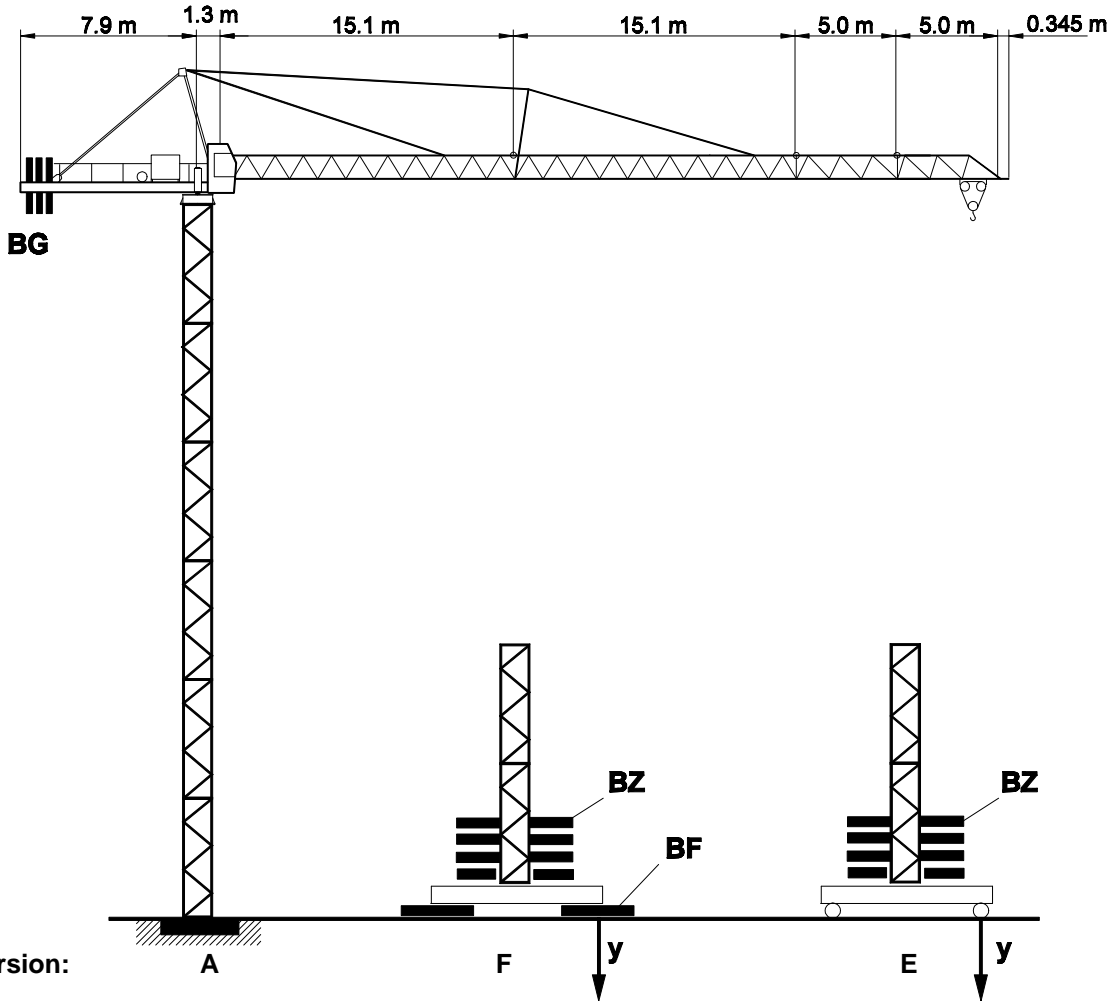
Unsere Vertretung:
Our representative:
Notre représentant:

SK 56

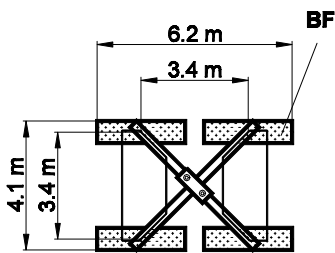
Turmkombinationen, Hakenhöhen, Eckkräfte, Zentralballast

Combinations of tower section, hook heights, forces acting per corner, base ballast

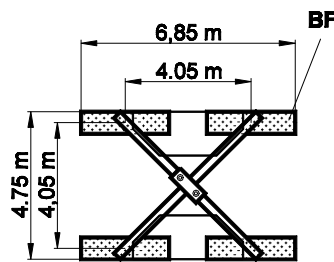
Combinations possibles et hauteurs sous crochet, pressions par coin, contrepoids central



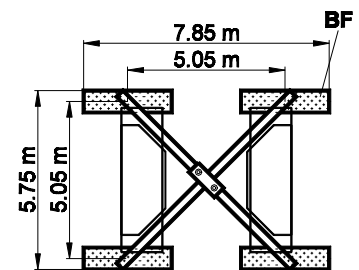
FK 310



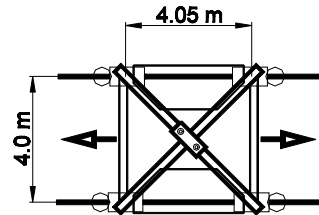
FK 410/414



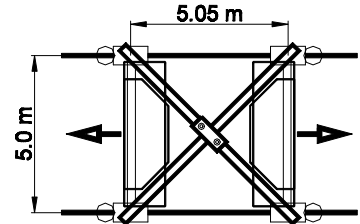
FK 514



FKF 410/414



FKF 514



Bodenauflagen

Ground support
Support sol

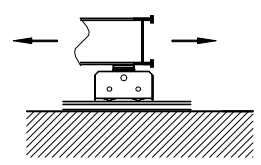
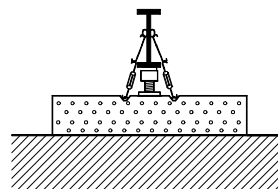
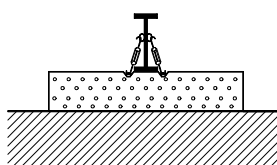
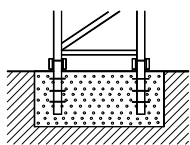
Version:

A

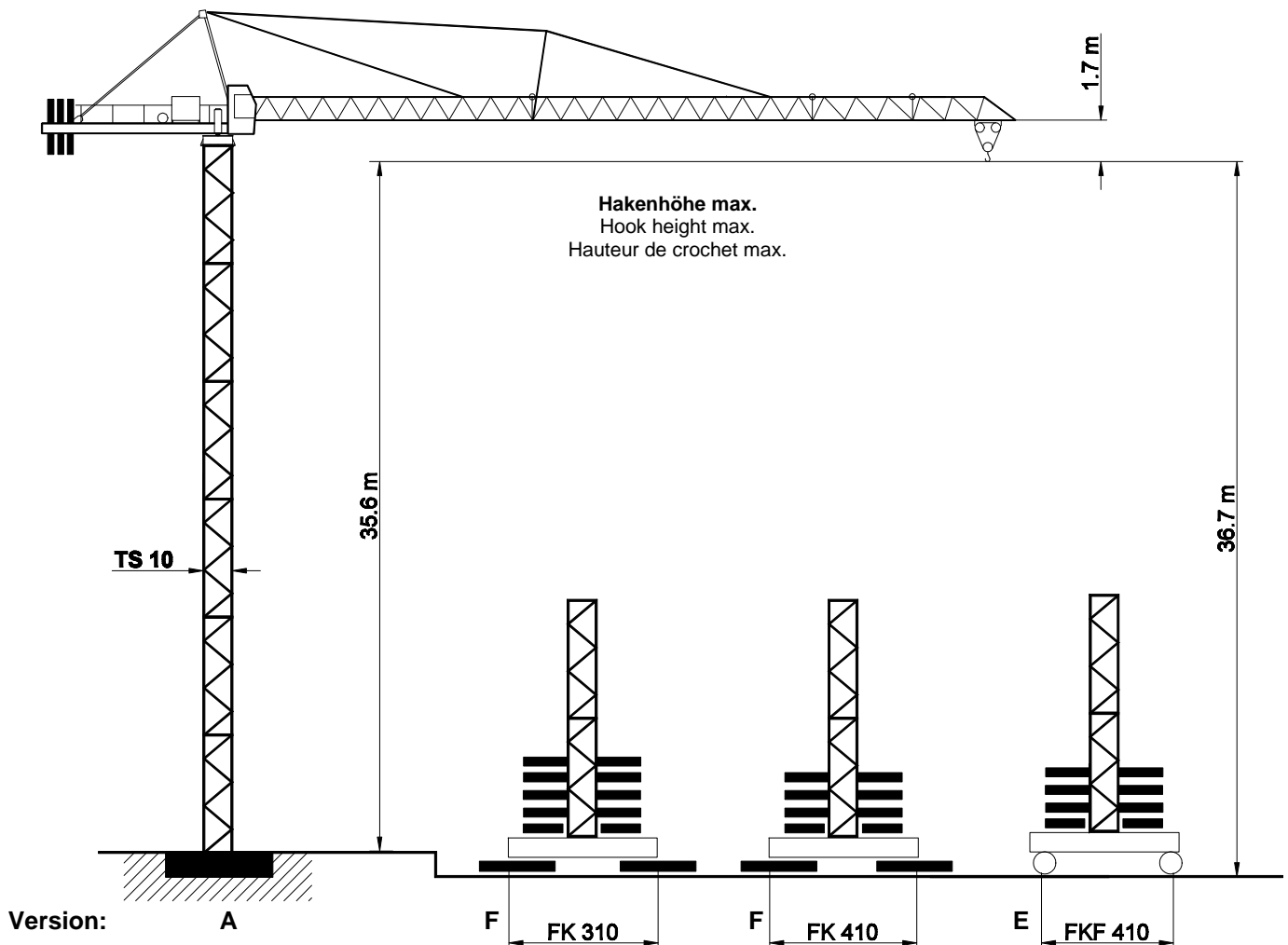
F

F / SP

E



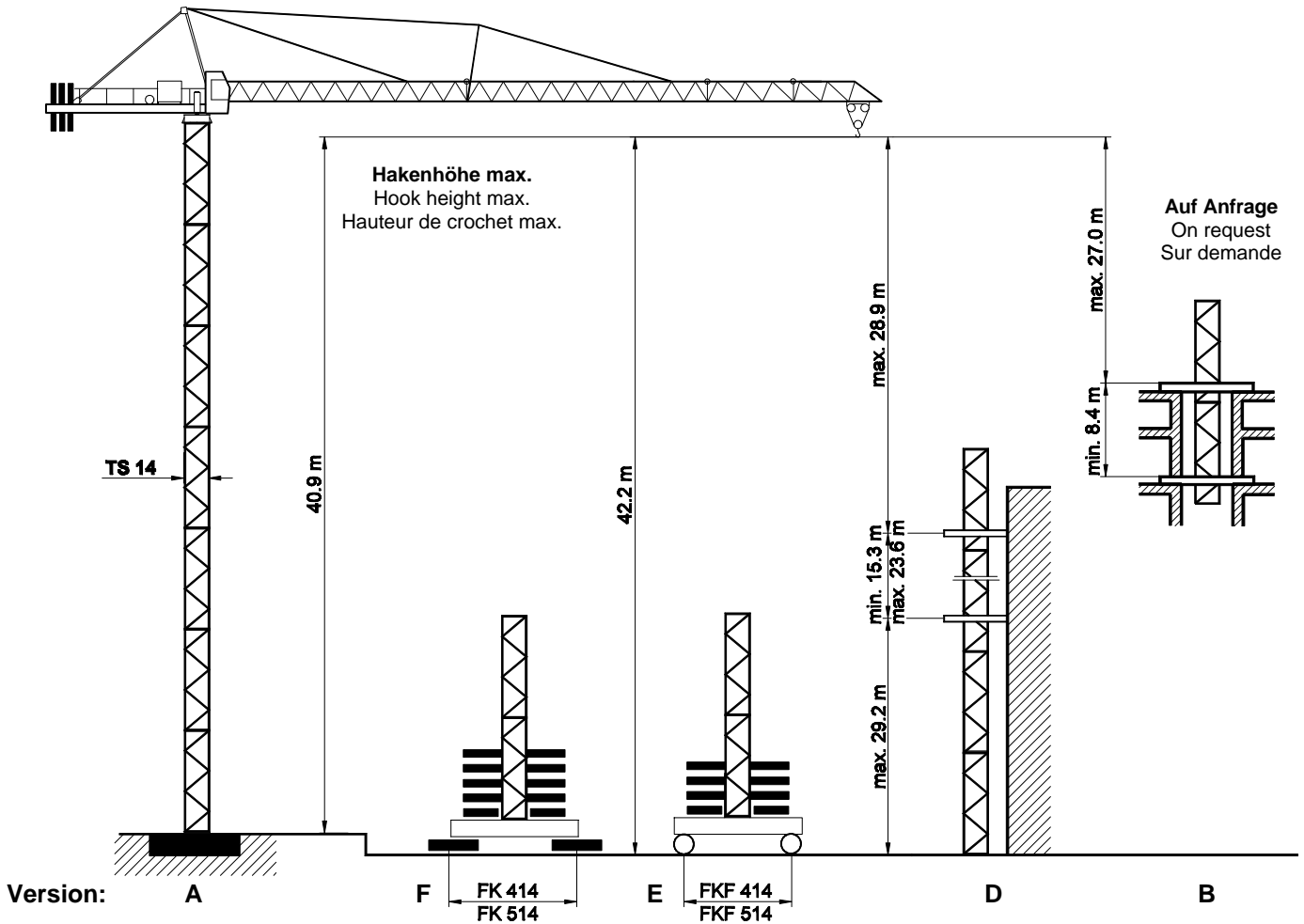
SK 56 Turm / Tower / Tour TS 10



| TS 10 | | Version A | Version F | | | | | | Version E | | | | | | |
|--|-------------|-----------|--|------------|-------------------|--------|-----------------|-----------|--|--------------------------------|--|------|-----------|------|--|
| Turm / Tower / Tour TS 10.3 | TS 10.4 | HK | HK | BZ + BF | y i.B. | a.B. | BZ + BF | y i.B. | a.B. | Turm / Tower / Tour TS 10.3 | TS 10.4 | BZ | y i.B. | a.B. | |
| 6.0 m | 12.0 m | m | m | t | kN | kN | t | kN | kN | 6.0 m | 12.0 m | t | kN | kN | |
| 6 x TS 10.3 | 3 x TS 10.4 | 35.6 | 36.7 | 60.8 | 392 | 437 | 40.8 | 319 | 359 | 5 x TS 10.3 | 3 x TS 10.3 | 40.0 | 341 | 371 | |
| 5 x TS 10.3 | | 29.6 | 30.7 | 40.8 | 320 | 316 | 30.8 | 275 | 270 | 5 x TS 10.3 | | 30.0 | 293 | 278 | |
| 4 x TS 10.3 | 2 x TS 10.4 | 23.6 | 24.7 | 30.8 | 276 | 230 | 30.8 | 259 | 217 | 4 x TS 10.3 | 2 x TS 10.4 | 30.0 | 274 | 225 | |
| 3 x TS 10.3 | | 17.6 | 18.7 | 30.8 | 259 | 223 | 20.8 | 219 | 186 | 3 x TS 10.3 | | 30.0 | 257 | 214 | |
| 2 x TS 10.3 | 1 x TS 10.4 | 11.6 | 12.7 | 30.8 | 244 | 219 | 20.8 | 205 | 182 | 2 x TS 10.3 | 1 x TS 10.4 | 20.0 | 216 | 186 | |
| 1 x TS 10.3 | | 5.6 | 6.7 | 30.8 | 231 | 216 | 20.8 | 194 | 179 | 1 x TS 10.3 | | 20.0 | 202 | 182 | |
| Fundament Foundation Fondaton 5.0 x 5.0 x 1.2 m | | | Fundamentkreuz Cruciform base Croix de fondation | | | | | | Fundamentkreuz, fahrbar Cruciform base, railgoing Croix de fondation, mobile | | | | | | |
| | | | FK 310 | | | FK 410 | | | FKF 414 | | | | | | |
| Fundamentfüße Fixing angles Ancres de fondation 4 x FF 10/14 | | | BF 4 x 2.7 t | | BZ Block 5.0 t | | BF 4 x 2.7 t | | BZ Block 5.0 t | | Fahrschemel / bogie gerade / straight / droite F 40/1 | | | | |

TS 10.3 = 6.0 m

TS 10.4 = 12.0 m




| TS 14 | | Version A | Version F | | | | | | | Version E | | | | | | | |
|--|-------------|-----------|-----------|---|-----------|-------------------|-----------------|-----------------|------|----------------------------|---|--|---------|-----------|--|--|--|
| Turm / Tower / Tour TS 14.3 | TS 14.4 | HK | HK | BZ + BF t | y i.B. | a.B. | BZ + BF t | y i.B. | a.B. | BZ t | y i.B. | a.B. | BZ t | y i.B. | a.B. | | |
| 5.9 m | 11.8 m | m | m | t | kN | kN | t | kN | kN | t | kN | kN | t | kN | kN | | |
| 7 x TS 14.3 | | 40.9 | 42.2 | | | | 43.0 | 329 | 449 | | | | 42.2 | 334 | 449 | | |
| 6 x TS 14.3 | 3 x TS 14.4 | 35.0 | 36.3 | 60.8 | 379 | 435 | 33.0 | 285 | 330 | 60.0 | 405 | 448 | 32.2 | 290 | 333 | | |
| 5 x TS 14.3 | | 29.1 | 30.4 | 40.8 | 308 | 316 | 23.0 | 243 | 247 | 40.0 | 328 | 326 | 22.2 | 247 | 251 | | |
| 4 x TS 14.3 | 2 x TS 14.4 | 23.2 | 24.5 | 30.8 | 264 | 231 | 23.0 | 227 | 198 | 30.0 | 280 | 239 | 22.2 | 231 | 203 | | |
| 3 x TS 14.3 | | 17.3 | 18.6 | 20.8 | 222 | 187 | 23.0 | 213 | 182 | 20.0 | 235 | 191 | 22.2 | 217 | 186 | | |
| 2 x TS 14.3 | 1 x TS 14.4 | 11.4 | 12.7 | 20.8 | 207 | 183 | 23.0 | 200 | 178 | 20.0 | 218 | 187 | 22.2 | 204 | 182 | | |
| 1 x TS 14.3 | | 5.5 | 6.8 | 20.8 | 195 | 179 | 23.0 | 189 | 174 | 20.0 | 203 | 183 | 22.2 | 193 | 178 | | |
| Fundament Foundation Fondaton | | | | Fundamentkreuz Cruciform base Croix de fondation | | | | | | | Fundamentkreuz, fahrbar Cruciform base, railgoing Croix de fondation, mobile | | | | | | |
| 5.6 x 5.6 x 1.2 m | | | | FK 414 | | | FK 514 | | | | FKF 414 | | | FKF 514 | | | |
| Fundamentfüße Fixing angles Ancres de fondation | | | | BF 4 x 2.7 t | | BZ Block 5.0 t | | BF 4 x 2.7 t | | BZ Block 5.0 t 6.1 t | | Fahrschemel / bogie gerade / straight / droite | | | Fahrschemel / bogie Kurve / curve / courbe | | |
| 4 x FF 10/14 | | | | | | | | | | F 40/1 | | | F 320 | | | | |

TS 14.3 = 5.9 m

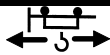








TS 14.4 = 11.8 m

SK 56

Ausladung und Tragfähigkeit / Radius and capacity / Portée et charge

| Ausleger Jib Flèche | Max. Tragfähigkeit max. capacity charge max. | Ausladung (m) und Tragfähigkeit (t) Radius (m) and capacity (t) Portée (m) et charge (t) | | | | | | | | | | | | | | | |
|---------------------------|---|--|------|------|------|------|------|------|------|------|------|------|------|------|------|------|------|
| | | 12 | 14 | 16 | 18 | 20 | 22 | 24 | 26 | 28 | 30 | 32 | 34 | 35 | 36 | 38 | 40 |
| m | 5.0 t |  | | | | | | | | | | | | | | | |
| L3 40.0 | 2.5 - 11.3 m | 4.63 | 3.86 | 3.30 | 2.88 | 2.54 | 2.27 | 2.05 | 1.87 | 1.71 | 1.57 | 1.45 | 1.35 | 1.30 | 1.26 | 1.17 | 1.10 |
| L2 35.0 | 2.5 - 12.9 m | 5.0 | 4.53 | 3.88 | 3.38 | 2.99 | 2.68 | 2.42 | 2.21 | 2.02 | 1.86 | 1.73 | 1.61 | 1.55 | | | |
| L1 30.0 | 2.5 - 14.4 m | 5.0 | 5.0 | 4.44 | 3.87 | 3.43 | 3.08 | 2.78 | 2.54 | 2.33 | 2.15 | | | | | | |

Geschwindigkeiten / Speeds / Vitesses

| | | | | | | | | |
|---|---|---|--------------------------|---|---|--------------------------|----------|--|
| PU S 4-50/2 |  | v = \rightarrow 22 / 45 m / min. | 4.0 kW | 400 V 50 Hz 3 Ph | | | | |
| SR 5-90/3 |  | v = 0 \rightarrow 25 m / min. | 2 x 5.0 kW | | | | | |
| K SRA 55/4 |  | v = 0 \rightarrow 0.75 min ⁻¹ | 4.4 kW | | | | | |
|  HK max. = 90 m 2 - Lagen / 2 - layers / 2 - couches | | | | | | | | |
| Type |  |  | \rightarrow 52 m / min | 1 500 kg |  | \rightarrow 26 m / min | 3 000 kg | Motorenleistung ges. Total motor output Puissance moteur (ohne/without/sans SR 5-90/3) ~ 25 kW |
| PU 15-25/3 | |  | \rightarrow 26 m / min | 2 500 kg | | \rightarrow 13 m / min | 5 000 kg | |
| 15.0 kW | |  | \rightarrow 6 m / min | | | \rightarrow 3 m / min | | Anschlußleistung Connected power Puissance installée 40 kVA |

Gegengewichtsballast / Counterweight / Contrepoids

| Ausleger / Jib / Flèche | | L 1 | L 2 | L 3 |
|--|-----|----------|----------|----------|
| Gegengewicht Counterweight Contrepoids | BG | 9 450 kg | 9 450 kg | 9 450 kg |
| | [t] | 3 x 3.15 | 3 x 3.15 | 3 x 3.15 |

SK 56 Transportmaße und Transportgewichte

Dimensions and weights of transport
Dimensions et poids pour transport

Montagegewichte siehe Betriebsanleitung!
Mounting weights see operating manual!
Poids de montage voir instruction de service!

| | Benennung Designation Désignation | | Abmessungen (m / ft) Dimensions (m / ft) | | | Gewicht Weight Poids t / kips | Volumen Volume m ³ / ft ³ |
|----|--|--|---|------|------|--|---|
| | | | l | b | h | | |
| 1 | Ausleger / Jib / Flèche Schuss / Section / Élément I Schuss / Section / Élément II | | 15.25 | 1.05 | 1.50 | 2.40 | 24.0 |
| | | | 50.03 | 3.45 | 4.92 | 5.3 | 849 |
| | | | 14.43 | 0.94 | 1.20 | 1.00 | 16.3 |
| | | | 47.34 | 3.08 | 3.94 | 2.2 | 574 |
| 2 | Ausleger / Jib / Flèche Schuss / Section / Élément IV Schuss / Section / Élément V Seilstation / Jib end / Bout de flèche X | | 5.15 | 0.94 | 0.94 | 0.25 | 4.5 |
| | | | 16.90 | 3.08 | 3.08 | 0.55 | 160 |
| | | | 5.15 | 0.94 | 0.94 | 0.25 | 4.5 |
| | | | 16.90 | 3.08 | 3.08 | 0.55 | 160 |
| | | | 0.89 | 0.32 | 0.34 | 0.03 | 0.09 |
| | | | 2.92 | 1.05 | 1.12 | 0.07 | 3 |
| 3 | Drehbühne mit Drehkranzauflage u. Kabine Turntable with slewing ring support and cabin Plateforme tournante avec support de couronne d'orientation et cabine | | 10.14 | 2.50 | 2.35 | 5.75 | 59.6 |
| | | | 33.27 | 8.20 | 7.71 | 12.68 | 2103 |
| 4 | Drehbühne mit Drehkranzauflage Turntable with slewing ring support Plateforme tournante avec support couronne d'orientation | | 9.25 | 1.77 | 2.04 | 4.5 | 33.4 |
| | | | 30.03 | 5.81 | 6.69 | 9.92 | 1167 |
| 5 | Kabine mit Podest und Geländer Cabin with support and railing Cabine avec appui et garde corps | | 2.65 | 2.21 | 1.30 | 0.50 | 7.6 |
| | | | 8.69 | 7.25 | 4.26 | 1.10 | 268 |
| 6 | Gegengewichtsballast Counter jib ballast Contrepoids | | 1.20 | 0.50 | 2.84 | 3.15 | 1.4 |
| | | | 3.94 | 1.64 | 9.32 | 6.95 | 60 |
| 7 | Turmschuss Tower section Élément de tour | | 6.00 | 1.25 | 1.25 | 1.35 | 9.38 |
| | | | 19.69 | 4.10 | 4.10 | 2.98 | 355 |
| | | | 5.91 | 1.60 | 1.61 | 1.45 | 15.22 |
| | | | 19.39 | 5.25 | 5.28 | 3.20 | 538 |
| | | | 12.00 | 1.25 | 1.25 | 2.60 | 18.75 |
| | | | 39.37 | 4.10 | 4.10 | 5.73 | 662 |
| | | | 11.80 | 1.60 | 1.61 | 2.70 | 30.40 |
| | | | 38.71 | 5.25 | 5.28 | 5.95 | 1073 |
| 8 | Fundamentkreuz, fahrbar, geklappt Movable undercarriage, folded Châssis roulant, replié | | 6.80 | 2.20 | 1.62 | 5.70 | 24.2 |
| | | | 22.31 | 7.22 | 5.32 | 12.57 | 857 |
| | | | 8.25 | 2.40 | 1.67 | 7.40 | 33.07 |
| | | | 27.07 | 7.87 | 5.48 | 24.28 | 1167 |
| 9 | Fundamentkreuz, stationär, geklappt Stationary undercarriage, folded Châssis fixe, replié | | 5.74 | 0.95 | 0.90 | 3.25 | 4.91 |
| | | | 18.83 | 3.12 | 2.95 | 7.16 | 173 |
| | | | 6.04 | 1.68 | 0.81 | 3.40 | 8.22 |
| | | | 19.82 | 5.51 | 2.66 | 7.50 | 290 |
| | | | 7.55 | 1.50 | 1.01 | 4.90 | 11.44 |
| | | | 24.77 | 4.92 | 3.31 | 16.08 | 403 |
| 10 | Zentralballaststein Central ballast block Bloc de fondation | | 4.00 | 1.35 | 0.65 | 6.10 | 3.5 |
| | | | 13.12 | 4.43 | 2.13 | 13.45 | 124 |
| | | | 3.50 | 1.50 | 0.67 | 5.00 | 3.5 |
| | | | 11.48 | 4.92 | 2.20 | 11.24 | 124 |
| 11 | Fundamentblock Foundation pad Bloc de fondation | | 2.80 | 0.70 | 0.55 | 2.70 | 1.08 |
| | | | 9.19 | 2.30 | 1.80 | 5.95 | 38 |
| 12 | Diverse Montageteile Accessories Accessoires | | | | | | |