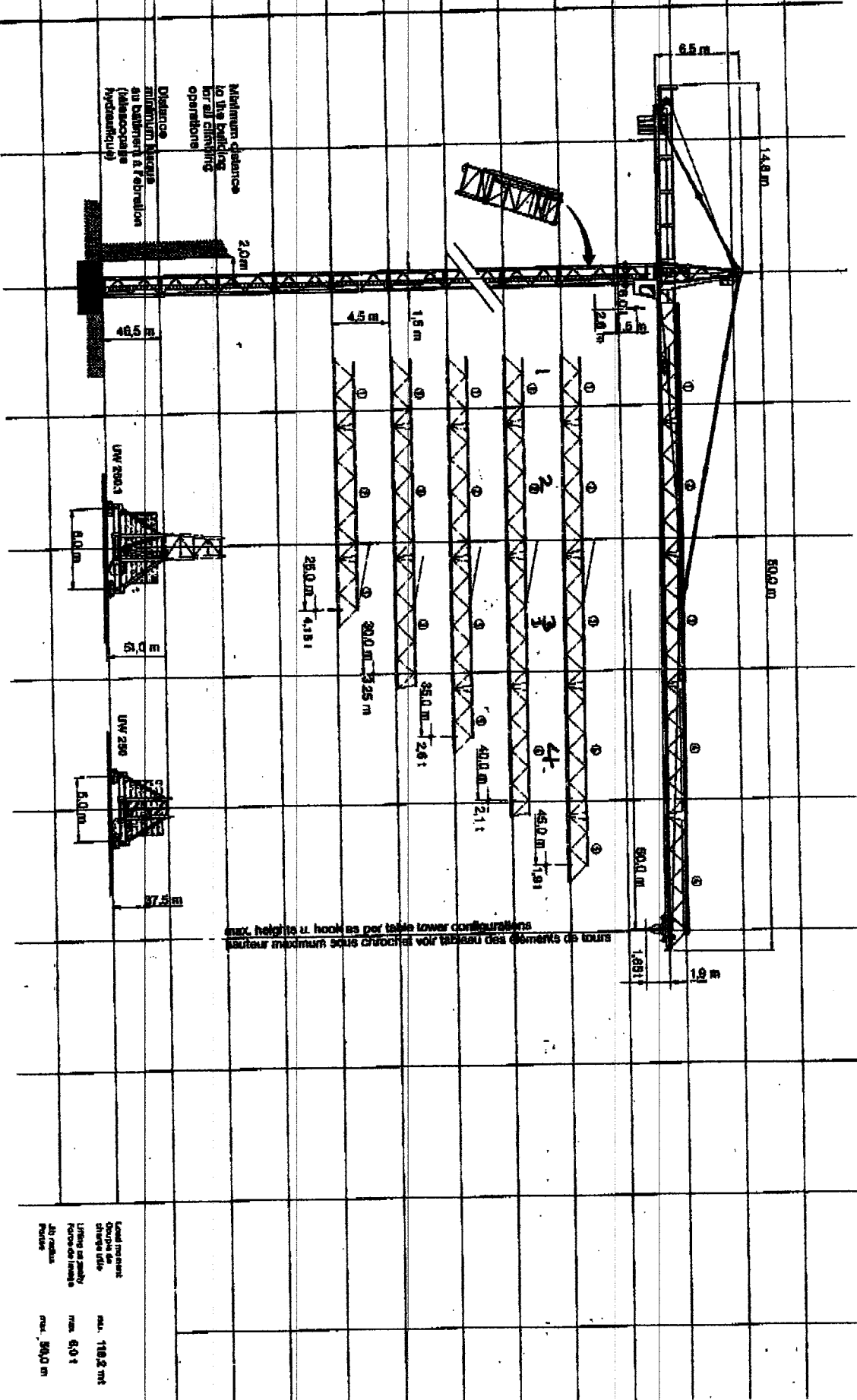


2 pages



Minimum clearance
to the building
for all climbing
operations

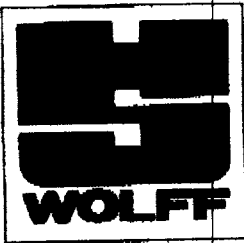
Distance
minimum clearance
to building & structure
(minimum clearance
hydraulic)

max. height u. hook es per tower configurations
hauteur maximum sous crochet voir tableau des éléments de tours

Load moment
Charge au
crochet (idle)
Force de levée

At radius
Portée

max. 110.2 tmt
max. 6.0 t
max. 50.0 m



WK 100 EC

Maximum Loading Capacity
Maximum Jib Radius

6 tonnes
50 metres

TECHNICAL DATA

CAPACITY RADIUS

		Radius (m)	2.6-	20	25	30	35	40	45	50	
Jib length (m)	25	2.6 - 19.7	6.0	5.93	4.56						Capacity (t)
	30	2.6 - 19.3		5.81	4.47	3.57					
	35	2.6 - 18.8		5.66	4.36	3.48	2.86				
	40	2.6 - 18.3		5.50	4.22	3.38	2.76	2.31			
	45	2.6 - 18.0		5.43	4.16	3.33	2.73	2.28	1.92		
	50	2.6 - 18.0		5.32	4.10	3.28	2.70	2.26	1.92	1.65	

Standard jib length = 30/40/50m

ARRANGEMENT OF COUNTERWEIGHTS

Jib (m)	25	30	35	40
to tower				
Tot. weight (t)	5.6	6.8	8.8	10.0
Jib (m)	45	50		
to tower				
Tot. weight (t)	12.4	14.4		

OPERATIONAL SPEEDS — MOTOR OUTPUTS

Drive (Typ)	Operational speeds (Motion)	(m/min)	Reev-ing (falls)	max. Hook-travel (m)	Output (kW)	Total Output (kW)
Hw 6373	Hoisting up to	1.5t	80.0	2	145	37
		3.0t	50			
		6.0t	28.0			
Tw 50 FG	Travers up to	3.0t	80/40/20		3.9	46.6
	6.0t	40/20				
Dw - FG	Slewing		0.8 min ⁻¹		5.7	
Fw	Cranetravel		25		11-22	57.6-68.6