

WK 100 EC

Maximum Loading Capacity
Maximum Jib Radius

6 tonnes
50 metres

TECHNICAL DATA

CAPACITY RADIUS

		Radius (m)	2.6-	20	25	30	35	40	45	50	
Jib length (m)	25	2.6 - 19.7	6.0	5.93	4.56						Capacity (t)
	30	2.6 - 19.3		5.81	4.47	3.57					
	35	2.6 - 18.8		5.66	4.36	3.48	2.86				
	40	2.6 - 18.3		5.50	4.22	3.38	2.76	2.31			
	45	2.6 - 18.0		5.43	4.16	3.33	2.73	2.28	1.92		
	50	2.6 - 18.0		5.32	4.10	3.28	2.70	2.26	1.92	1.65	

Standard jib length = 30/40/50m

ARRANGEMENT OF COUNTERWEIGHTS

Jib (m)	25	30	35	40
to tower				
Tot. weight (t)	5.6	6.8	8.8	10.0
Jib (m)	45	50		
to tower				
Tot. weight (t)	12.4	14.4		

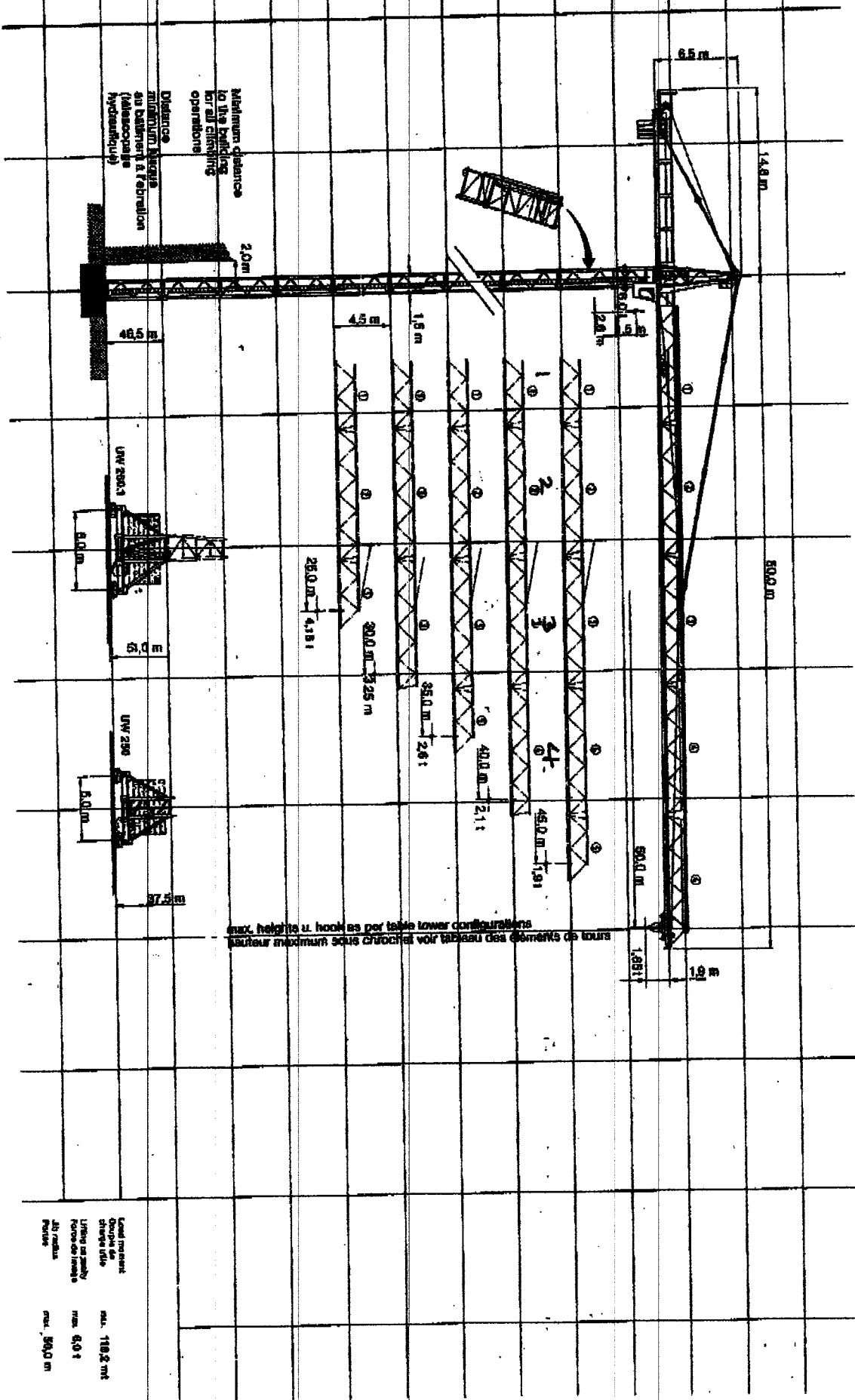
OPERATIONAL SPEEDS — MOTOR OUTPUTS

Drive (Typ)	Operational speeds (Motion)	(m/min)	Reev-ing (falls)	max. Hook-travel (m)	Output (kW)	Total Output (kW)
Hw 6373	Hoisting up to	1.5t	80.0	2	145	37
		3.0t	50			
		6.0t	28.0			
Tw 50 FG	Travers up to	3.0t	80/40/20		3.9	46.6
		6.0t	40/20			
Dw - FG	Slewing		0.8 min ⁻¹		5.7	
Fw	Cranetravel		25		11-22	57.6-68.6

032 74 99 225

MAZUR

www.zurawiewiezowe.pl



Load moment
 Charge au
 crochets (idle)
 Force de levée
 Au repos

max. 110.2 tmt
 max. 6.0 t
 max. 50.0 m

2 pages

032 74 99 225

MAZUR

www.zurawiewiezowe.pl